
PARTS CATALOG



Diesel Engine Pump

Model

PTD 306

PTD 206T

 **FUJI HEAVY INDUSTRIES LTD.**

ISSUE EMD-PP0643

HOW TO USE THIS PARTS CATALOG

1. Reference numbers with an asterisk




Reference numbers marked with an asterisk indicate that the particular part is available only as a complete set or assembly.

Example :

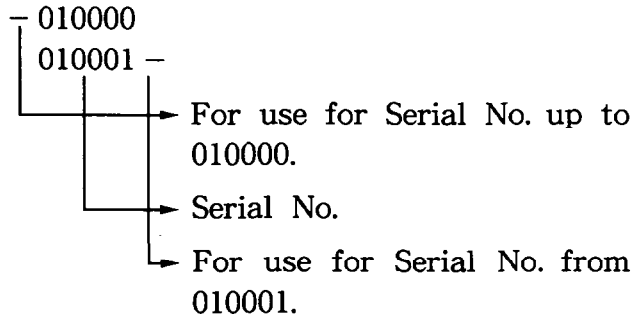
If the reference number is marked with an asterisk and the description of the part states that certain items are included, this means that those included items cannot be ordered separately and must be purchased as a complete assembly.

2. Description of interchangeability and execution columns




Example : Interchangeability column

-  Items interchangeable between the new and old parts.
-  Items not interchangeable between the new and old parts.
-  Items conditionally interchangeable between the new and old parts which are subject to the description in the execution column.

Example : Execution column



Example : Interchangeable

Part Number	↓	Execution	Explanation
Part B Part A		020000 -	This indicates that Part A changed to Part B for pumps with serial numbers from 20000, and that they are interchangeable.
Part C Part B Part A		020000 - 015000 -	This indicates that Part A changed to Part B for pumps with serial numbers from 15000, and that they are not interchangeable. Also, Part B changed to Part C for pumps with serial numbers from 20000 and that they are interchangeable.
Part A		020000 -	This indicates that Part A is a new part for pumps with serial numbers from 20000.
Part B		- 030000	This indicates that Part B is no longer used for pumps with serial numbers from 30001.
Part B Part A		020000 -	This indicates that Part A changed to Part B for pumps with serial numbers from 20000, and that they are conditionally interchangeable. (See NOTE described at the end of the section.)

3. The contents of this parts catalog are subject to revision without notice.
TO INSURE PROMPT AND ACCURATE SERVICE, ALSO THE FOLLOWING INFORMATION MUST BE GIVEN.

1. State exactly the quantity of each part and its part number.
2. Clearly state whether parts are to be shipped by express, freight or parcel post.
3. State the exact mailing address.

CONTENTS

	Page
FIG. 1A PUMP (PTD306)	1
FIG. 1B PUMP (PTD206T)	3
FIG. 2 CRANKCASE GROUP	5
FIG. 3 CYLINDER HEAD GROUP	7
FIG. 4 CRANKSHAFT and PISTON GROUP	9
FIG. 5 CAMSHAFT and VALVE ROCKER GROUP	11
FIG. 6 AIR CLEANER and MUFFLER GROUP	13
FIG. 7 GOVERNOR OPERATION GROUP	15
FIG. 8 BLOWER HOUSING and RECOIL STARTER GROUP	17
FIG. 9 FUEL TANK GROUP	19
FIG. 10 FUEL SYSTEM GROUP	21
FIG. 11 ACCESSORIES GROUP	23

FIG. 1A PUMP (PTD306)

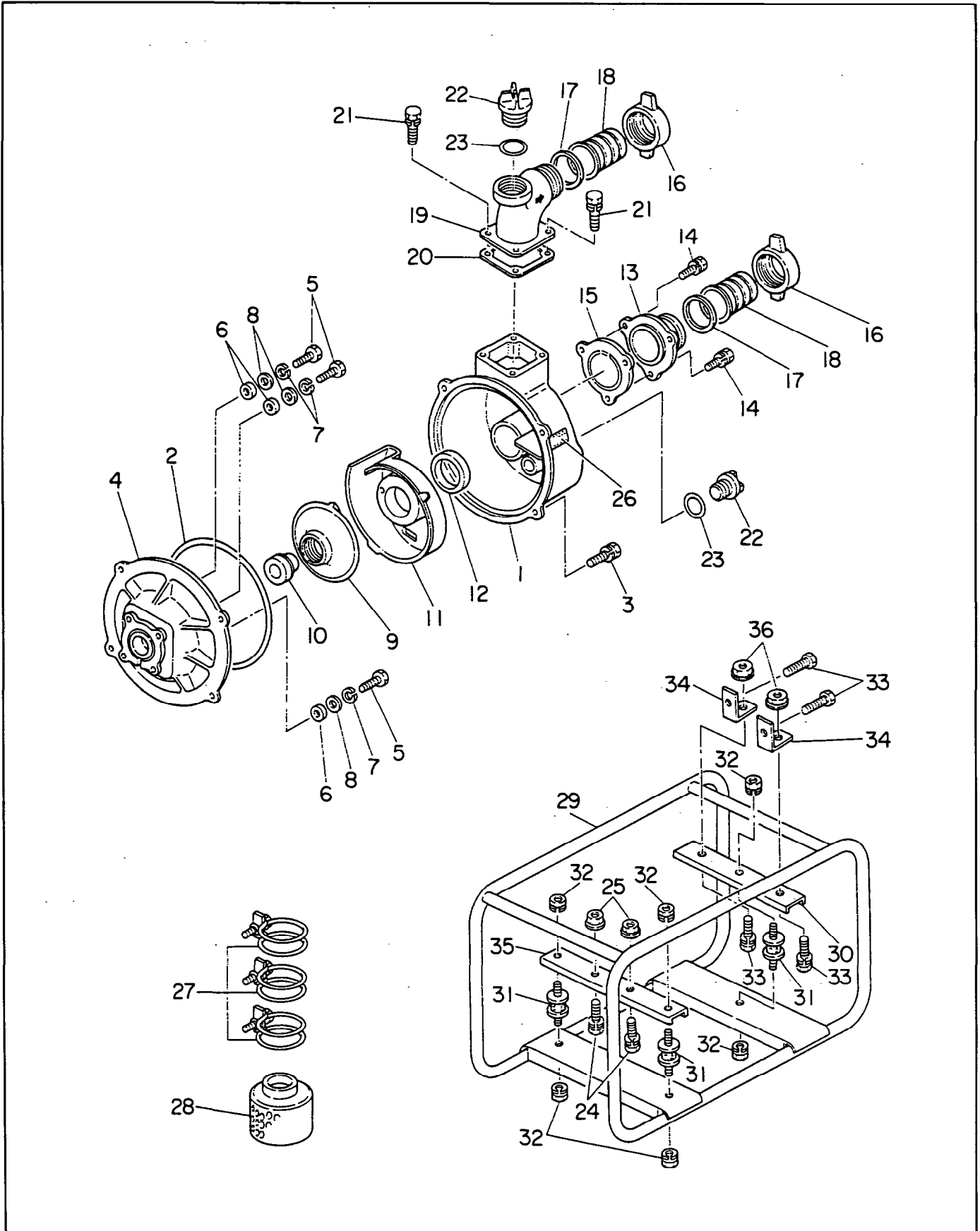


FIG. 1B PUMP (PTD206T)

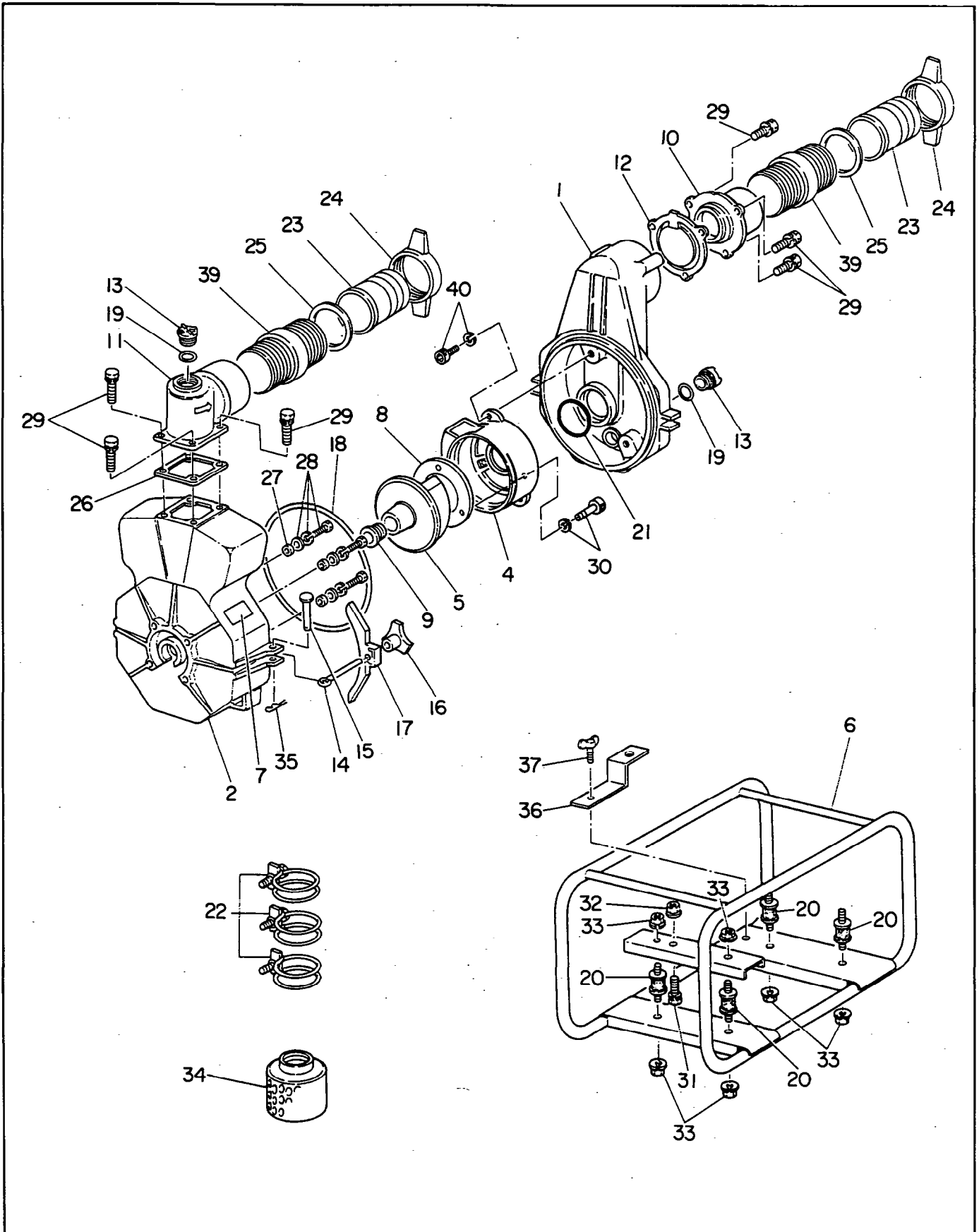


FIG. 1B PUMP (PTD206T)

Interchangeability

Ref. No.	Parts Number	Description	Q'ty	Execution
1	481-00000-62	CASING	1	
2	480-05210-02	CASING COVER	1	
4	481-00000-63	INNER CASING	1	
5	480-05210-04	IMPELLER	1	
6	481-00001-02	FRAME	1	
7	482-00044-03	LABEL, pump name	1	
8	481-00000-64	LINER	1	
9	480-05210-08	MECHANICAL SEAL	1	
10	481-00000-65	SUCTION FLANGE	1	
11	481-00000-66	DELIVERY FLANGE	1	
12	481-00000-67	CHECK VALVE	1	
13	480-05010-21	PLUG	2	
14	480-05210-13	COVER BOLT	2	
15	480-05210-14	RIVET	2	
16	480-05210-15	KNOB	2	
17	480-05210-16	CASING COVER HOLDER	2	
18	480-05210-17	PACKING, casing	1	
19	480-05010-22	"O" RING	2	
20	480-05210-19	CUSHION RUBBER	4	
21	480-05210-20	"O" RING, inner casing	1	
22	480-05010-28	HOSE BAND	3	
23	480-05210-22	NIPPLE (AL)	2	
24	480-05210-23	COUPLING (AL)	2	
25	480-05010-17	PACKING, nipple	2	
26	480-05010-20	PACKING, delivery flange	1	
27	480-05010-06	SEAL PACKING	4	
28	480-05210-27	BOLT and WASHER ASS'Y (M8x48)	4	
29	001-14082-50	BOLT and WASHER ASS'Y (M8x25)	7	
30	480-05210-29	SOCKET BOLT (M6x16)	3	
31	001-14084-00	BOLT and WASHER ASS'Y (M8x40)	2	
32	002-38080-00	FLANGE NUT (M8)	2	
33	480-10010-24	NUT and WASHER ASS'Y (M8)	6	
34	480-05210-33	STRAINER	1	
35	480-05210-34	SPRING PIN	2	
36	480-05210-35	SUPPORT	1	
37	480-05210-36	WING BOLT (M6x15)	1	
39	480-05310-30	NIPPLE (NPTxPF)	2	
40	480-05210-29	SOCKET BOLT (M6x16)	2	

When ordering parts : Always give the Model, Specification and Serial Number of Pump.

FIG. 3 CYLINDER HEAD GROUP

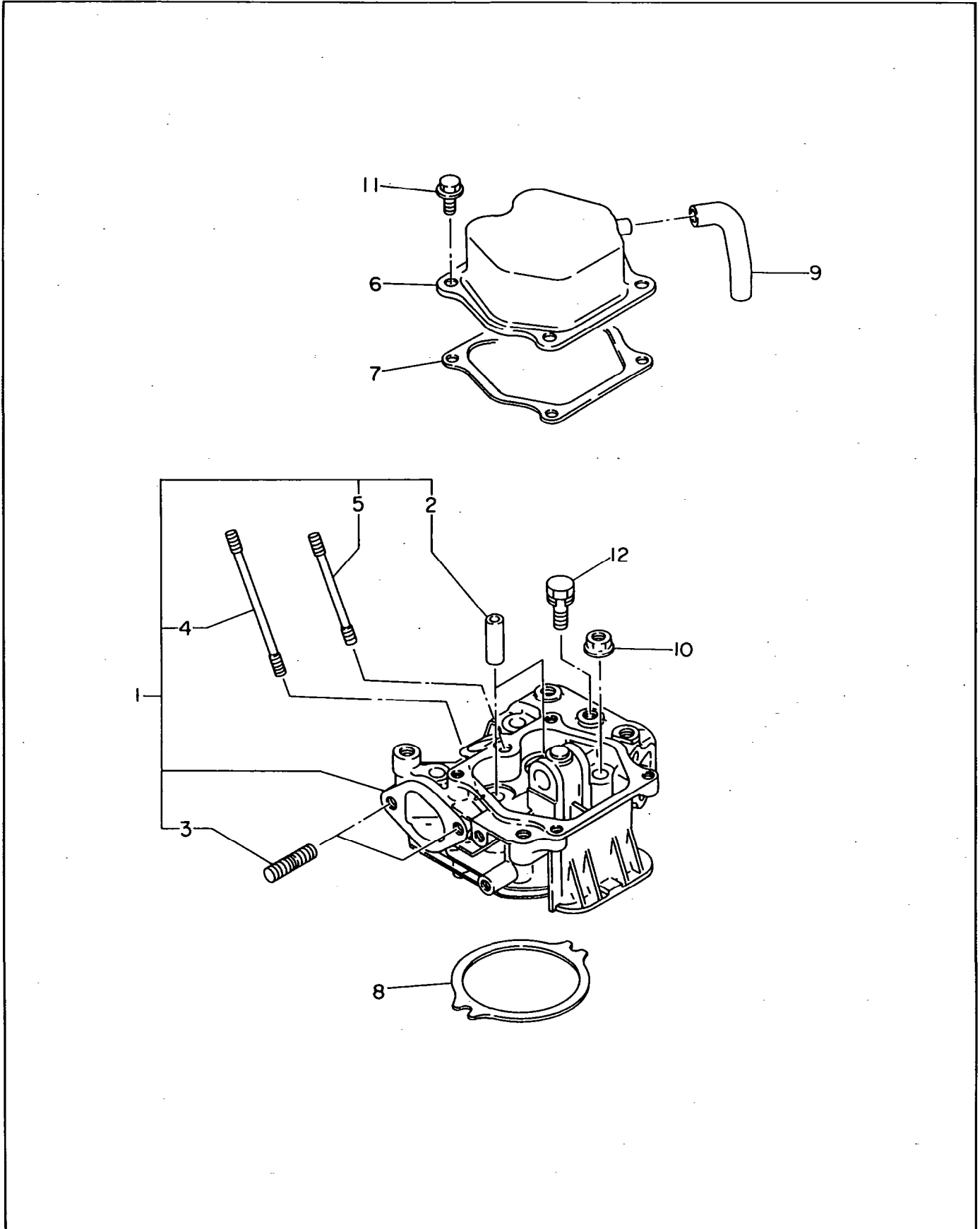


FIG. 4 CRANKSHAFT and PISTON GROUP

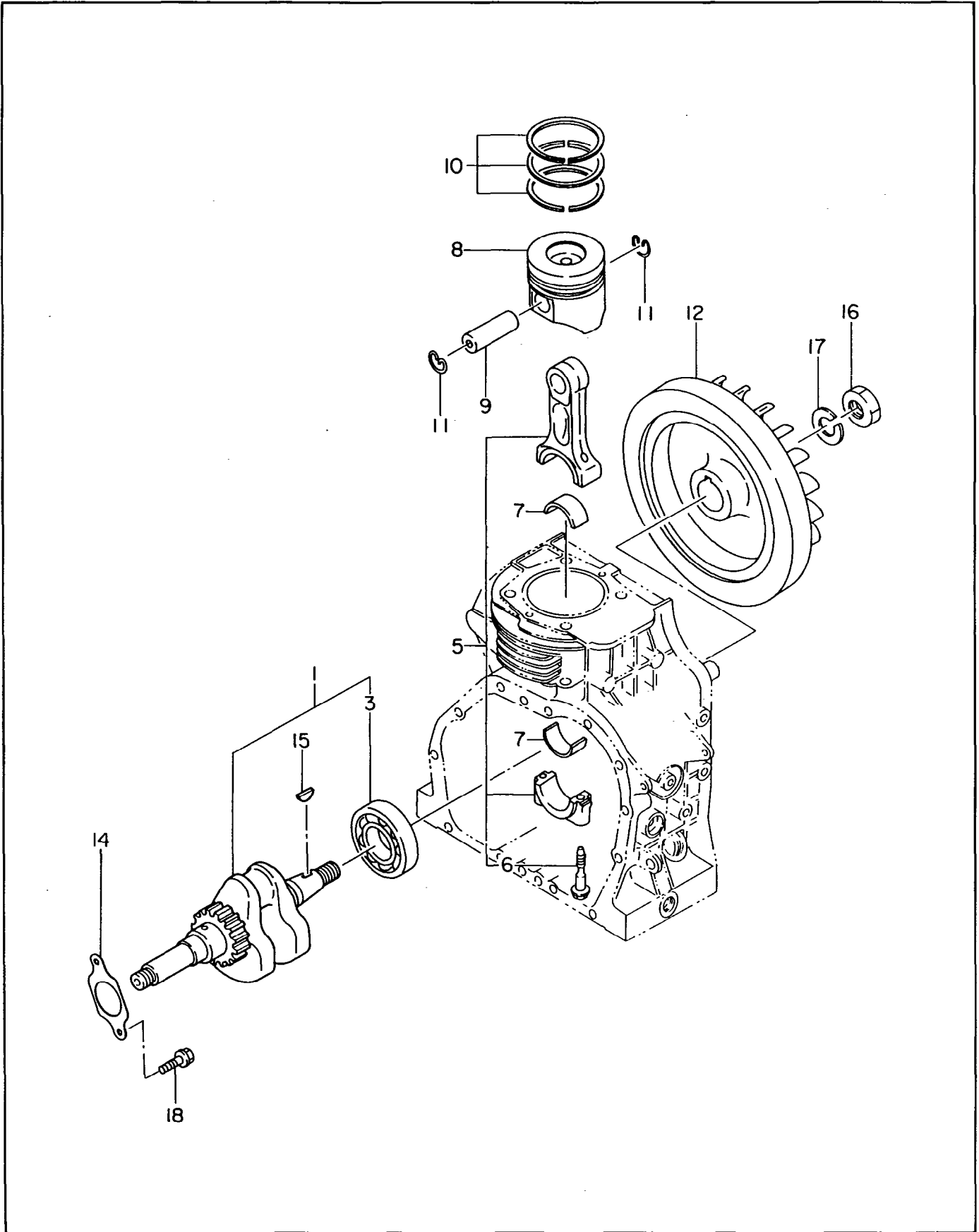


FIG. 5 CAMSHAFT and VALVE ROCKER GROUP

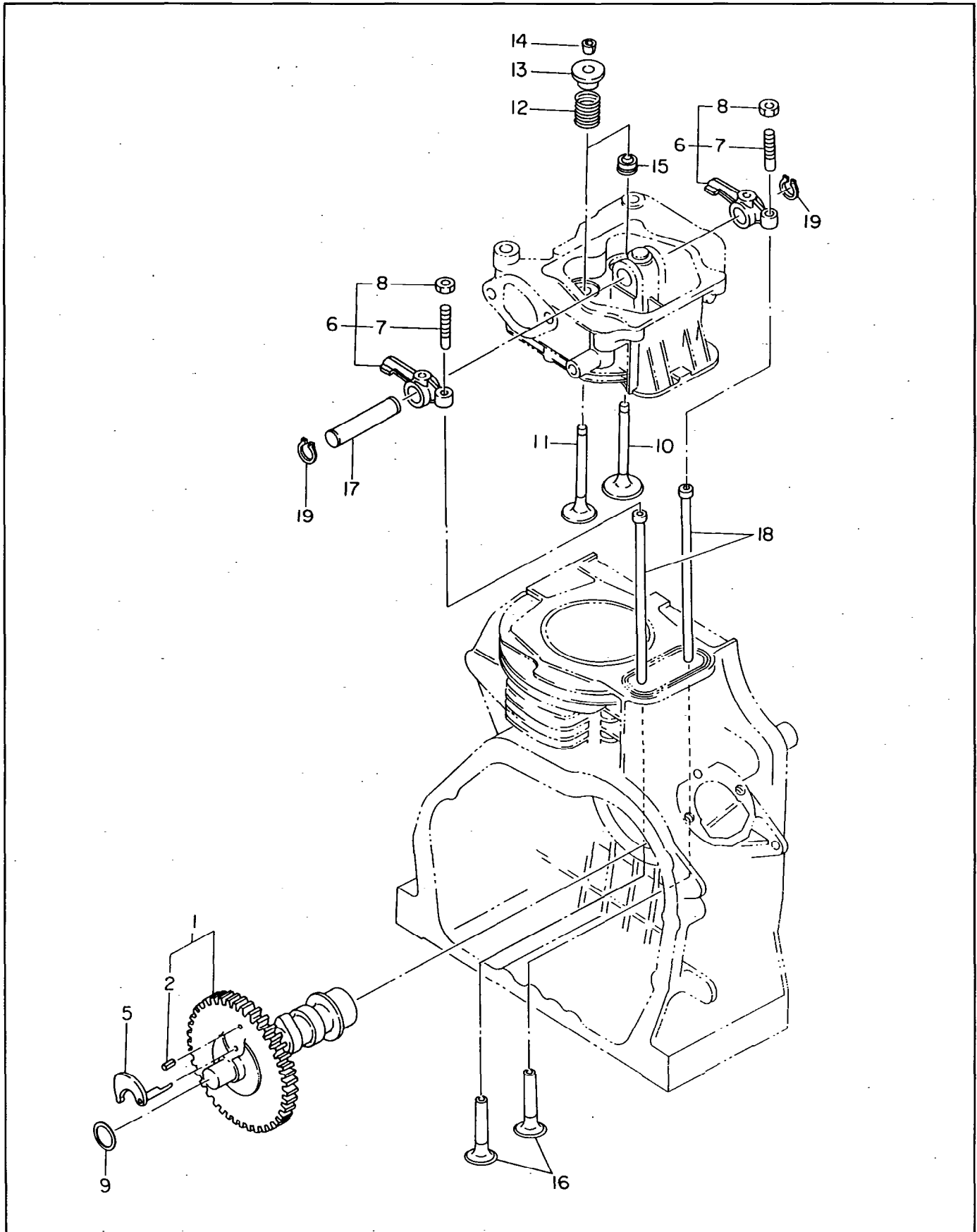


FIG. 6 AIR CLEANER and MUFFLER GROUP

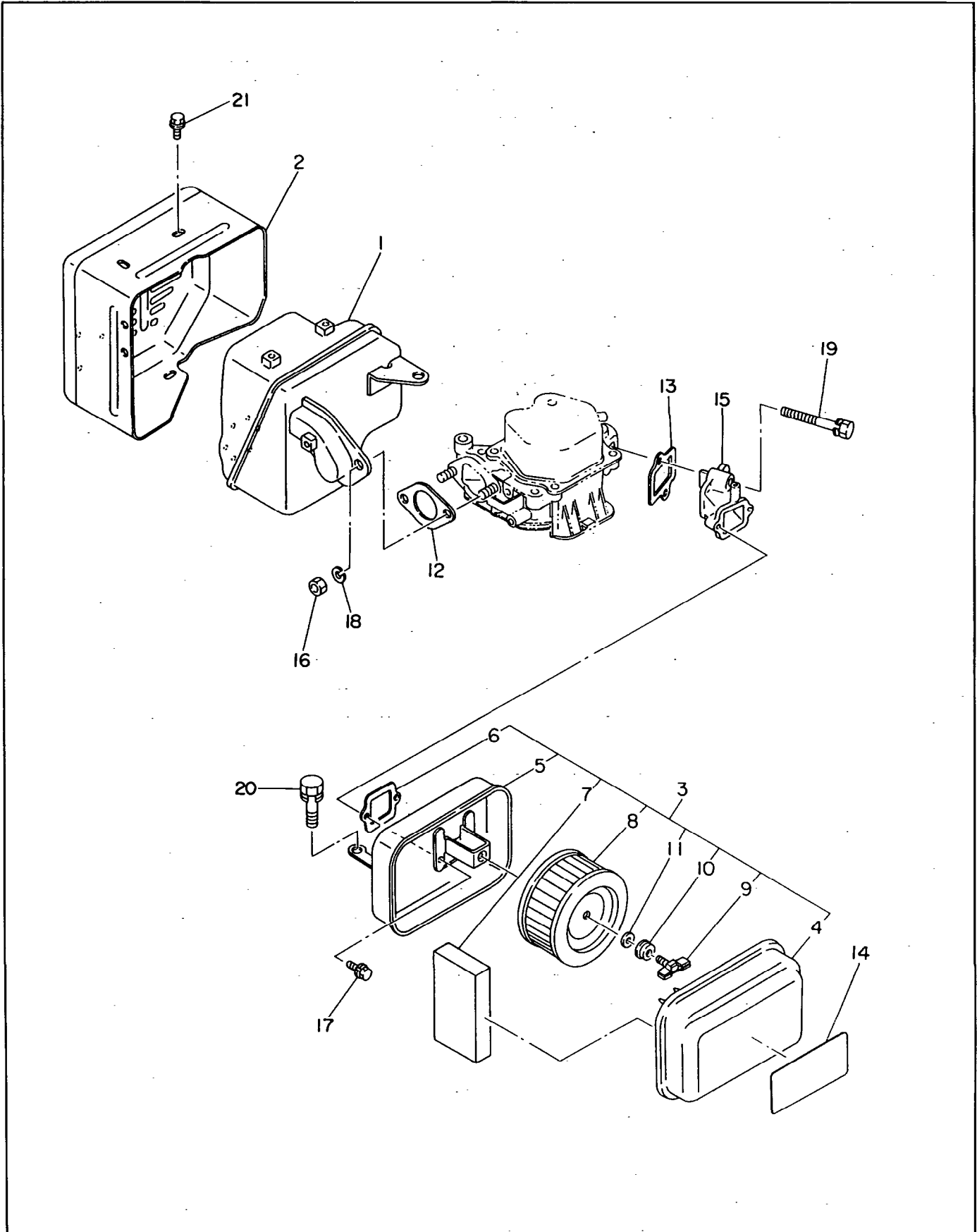


FIG. 7 GOVERNOR OPERATION GROUP

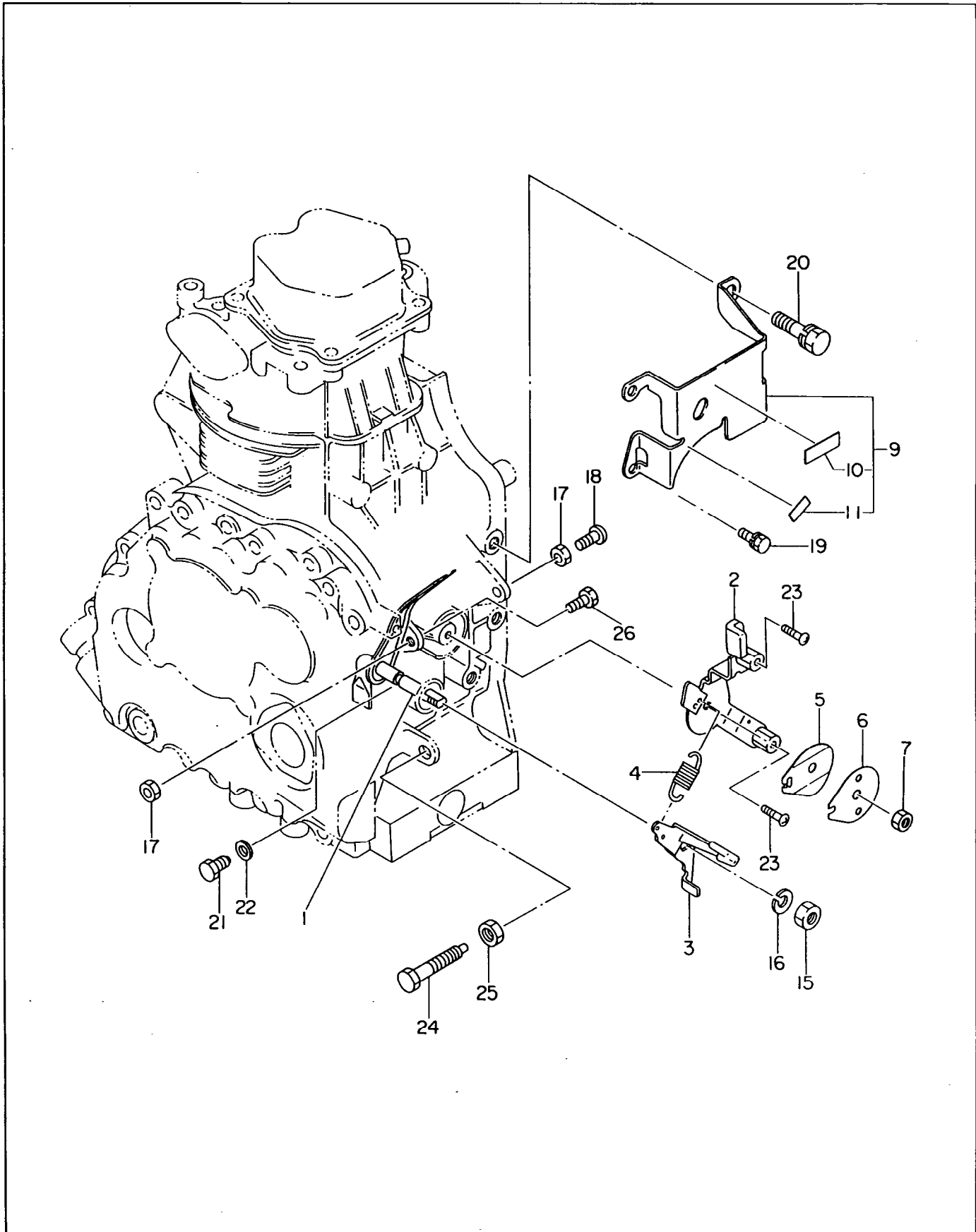


FIG. 8 BLOWER HOUSING and RECOIL STARTER GROUP

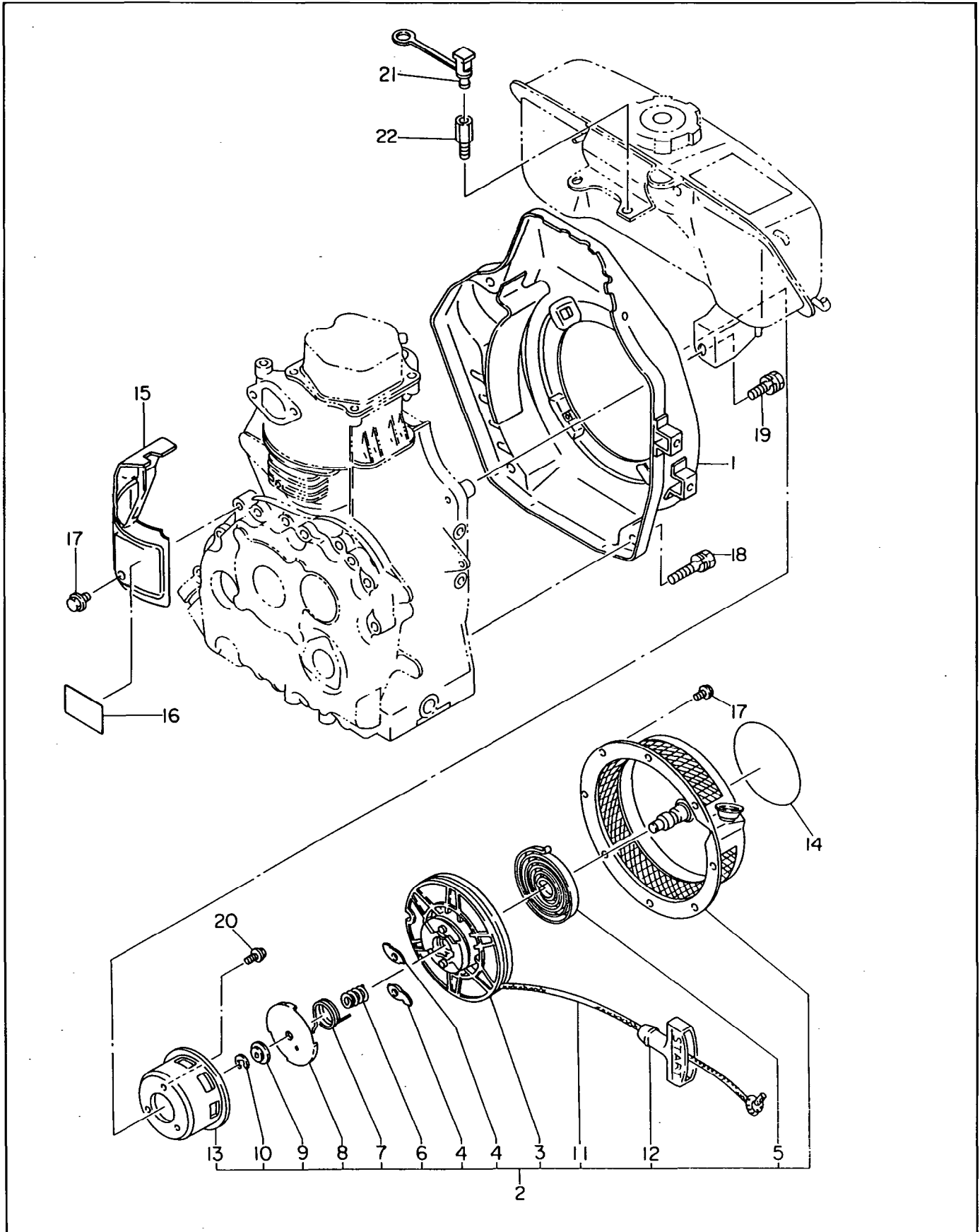


FIG. 9 FUEL TANK GROUP

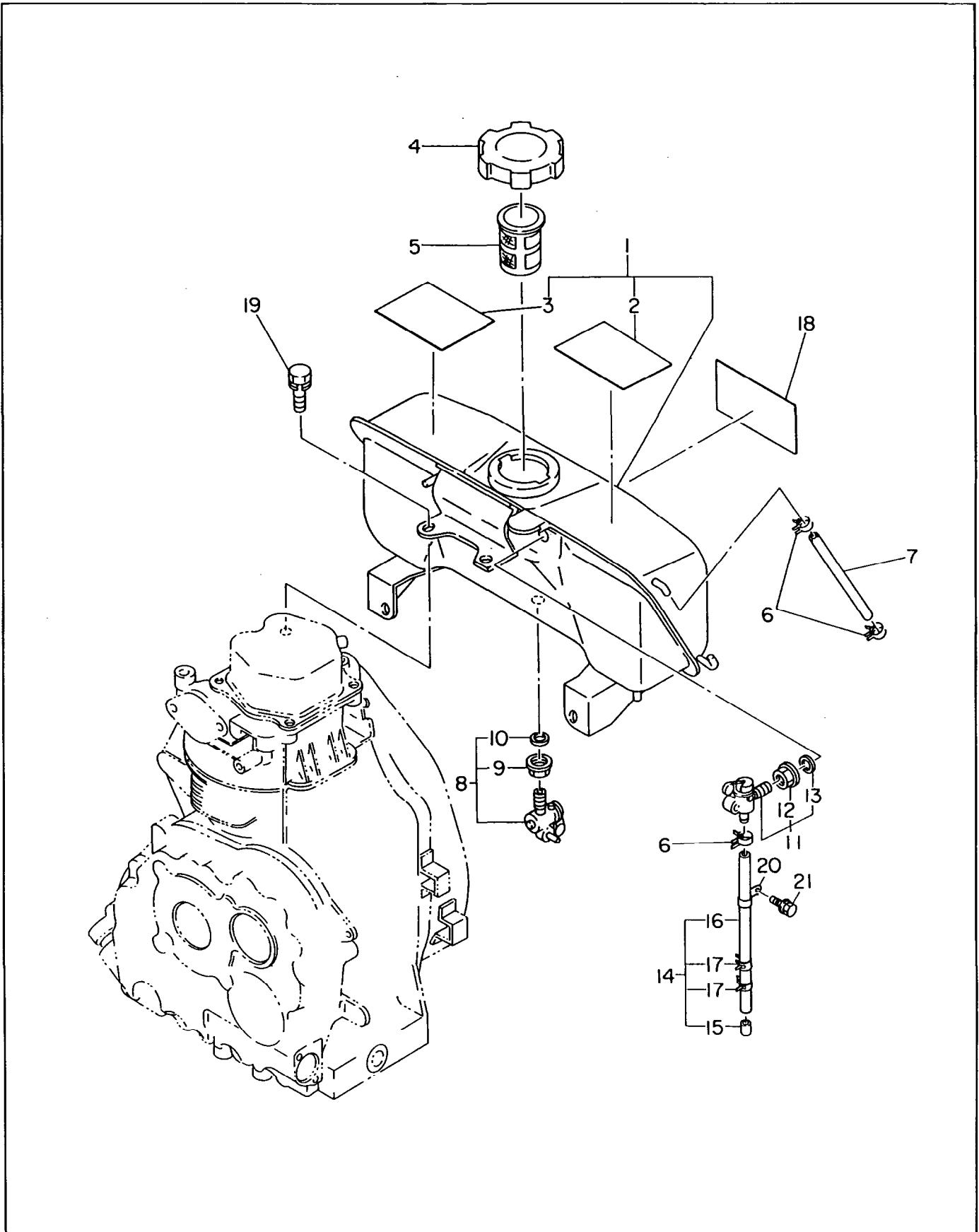


FIG. 10 FUEL SYSTEM GROUP

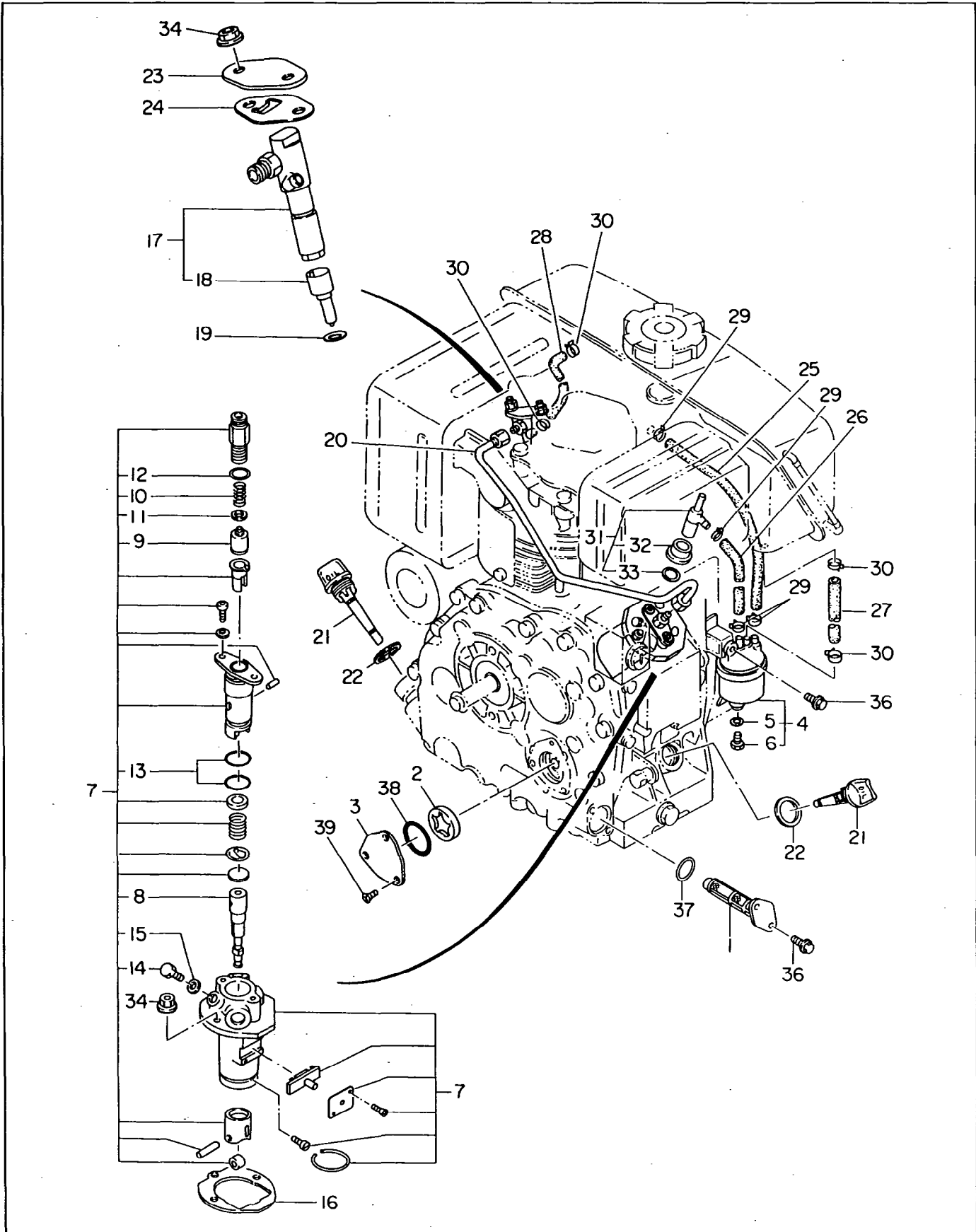
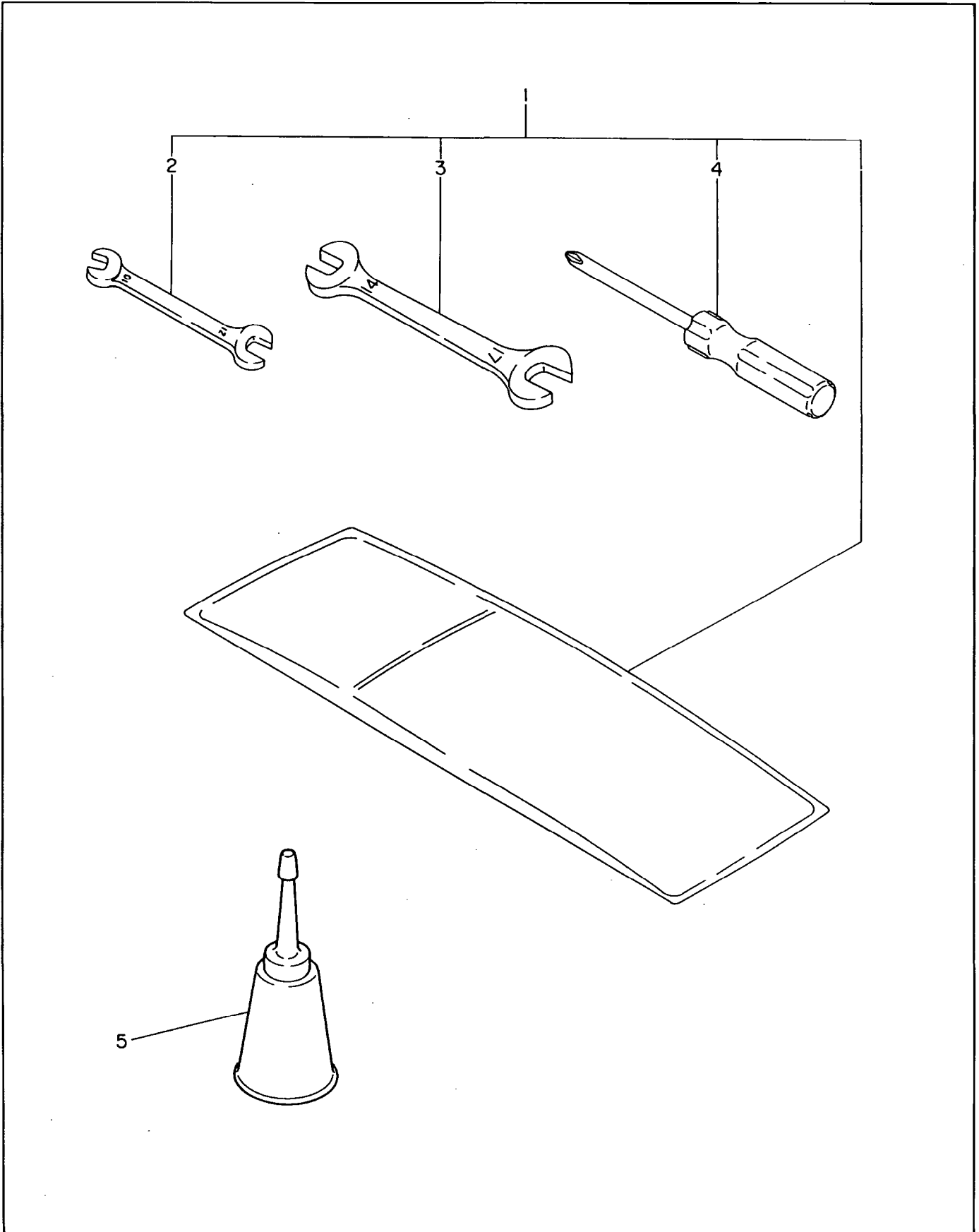


FIG. 10 FUEL SYSTEM GROUP

Ref. No.	Parts Number	Description	Q'ty	Interchangeability	
					Execution
1	243-64301-00	OIL FILTER ASS'Y	1		
2	228-63902-03	OIL PUMP, outer	1		
3	243-66020-01	COVER, oil pump	1		
*4	243-62101-10	FUEL FILTER ASS'Y Includes items 5 and 6	1		
5	228-62112-08	PACKING	1		
6	228-62111-08	PLUG	1		
*7	243-63101-10	INJECTION PUMP ASS'Y Includes items 8 thru 15	1		
8	243-63102-08	PLUNGER ASS'Y	1		
9	243-63103-08	DELIVARY VALVE	1		
10	243-63104-08	SPRING D.V.	1		
11	243-63105-08	GASKET	1		
12	243-63107-08	"O"RING	1		
13	243-63110-08	"O"RING	2		
14	243-63124-08	BOLT	1		
15	243-63125-08	GASKET	1		
16	243-65001-03	GASKET, injection pump(t=0.1)	1		
16	243-65002-03	GASKET, injection pump(t=0.2)	select one	1	
16	243-65003-03	GASKET, injection pump(t=0.3)	piece only	1	
*17	243-63201-00	NOZZLE ASS'Y Includes item 18	1		
18	243-63204-08	NOZZLE	1		
19	228-65004-03	GASKET, nozzle	1		
20	243-63301-01	INJECTION PIPE, compl.	1		
21	224-63601-03	OIL GAUGE	2		
22	021-32000-10	GASKET	2		
23	243-66001-01	BRACKET, nozzle 1	1		
24	243-66010-03	BRACKET, nozzle 2	1		
25	085-10600-00	RUBBER PIPE (6φ×12φ×175mm)	1		
26	085-10600-00	RUBBER PIPE (6φ×12φ×120mm)	1		
27	085-10400-00	RUBBER PIPE (4.5φ×9φ×85mm)	1		
28	085-10400-00	RUBBER PIPE (4.5φ×9φ×135mm)	1		
29	056-11100-20	HOSE CLAMP	4		
30	056-10800-10	HOSE CLAMP	4		
*31	243-66520-00	T-CONNECTOR ASS'Y Includes items 32 and 33	1		
32	243-66521-08	NUT	1		
33	243-66506-08	PACKING	1		
34	002-38060-00	FLANGE NUT	4		
36	011-00600-20	FLANGE BOLT	4		
37	006-26202-00	"O"RING	1		
38	006-26103-30	"O"RING	1		
39	004-11061-60	SCREW	3		

When ordering parts : Always give the Model, Specification and Serial Number of Pump.

FIG. 11 ACCESSORIES GROUP





FUJI HEAVY INDUSTRIES LTD.

INDUSTRIAL PRODUCTS DIV. / OVERSEAS SALES DEPT.

Subaru Bldg.

1-7-2, Nishi-Shinjuku, Shinjuku-ku, Tokyo 160, Japan

TEL: (TOKYO 03) 347-2414, 5 TELEX: 232-2401 FUJI J

CABLE ADDRESS: FUJIHEAVY TOKYO

FACSIMILE: (TOKYO 03) 347-2418